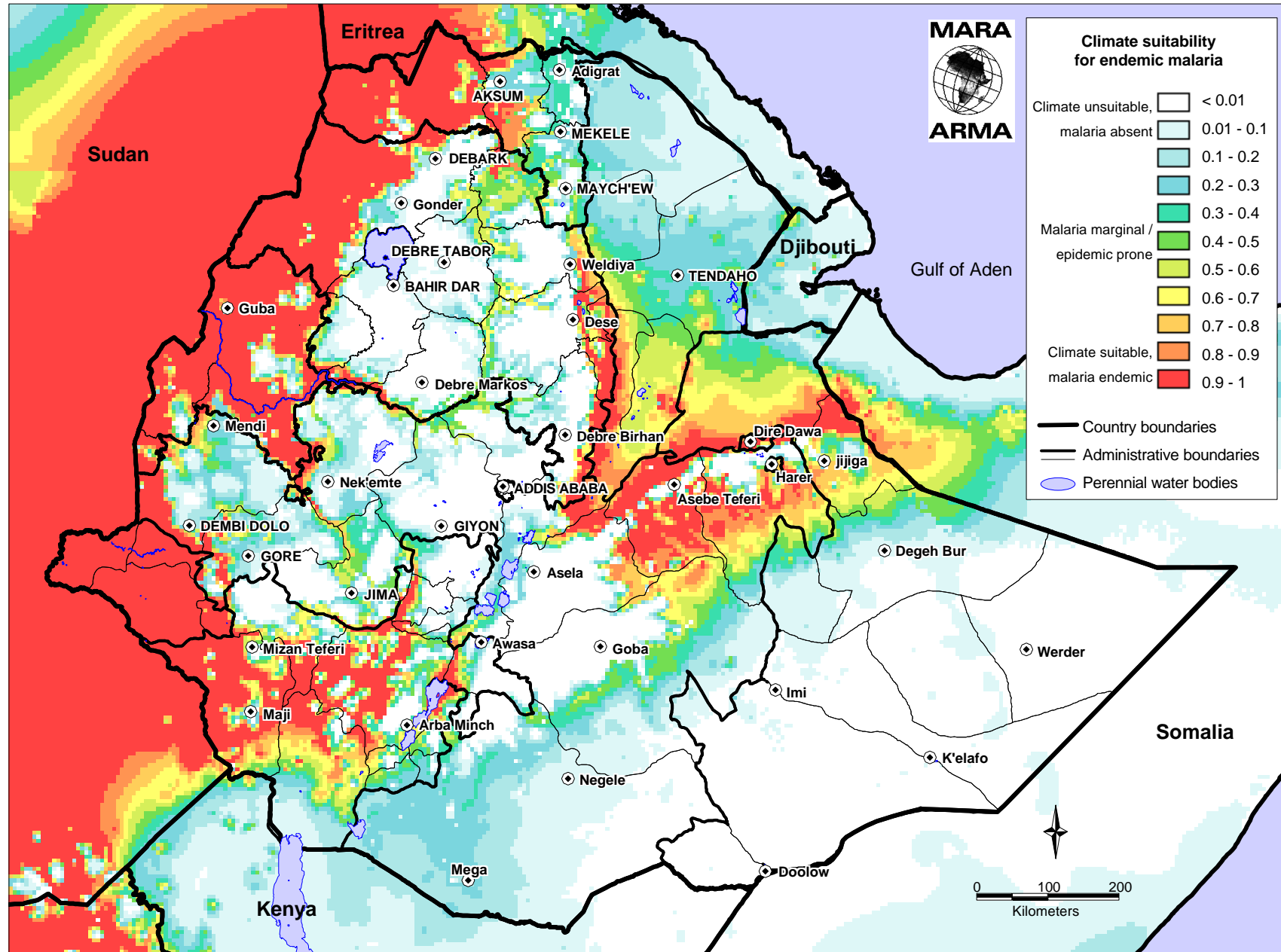


# Ethiopia: Distribution of Endemic Malaria



This map is a product of the MARA/ARMA collaboration (<http://www.mara.org.za>). July 2002, Medical Research Council, PO Box 70380, Overport, 4067, Durban, South Africa  
 CORE FUNDERS of MARA/ARMA: International Development Research Centre, Canada (IDRC); The Wellcome Trust UK; South African Medical Research Council (MRC);  
 Swiss Tropical Institute, Multilateral Initiative on Malaria (MIM) / Special Programme for Research and Training in Tropical Diseases (TDR), Roll Back Malaria (RBM).  
 Malaria distribution model: Craig, M.H. et al. 1999. Parasitology Today 15: 105-111.  
 Topographical data: African Data Sampler, WRI, [http://www.igc.org/wri/sdis/maps/ads/ads\\_idx.htm](http://www.igc.org/wri/sdis/maps/ads/ads_idx.htm)