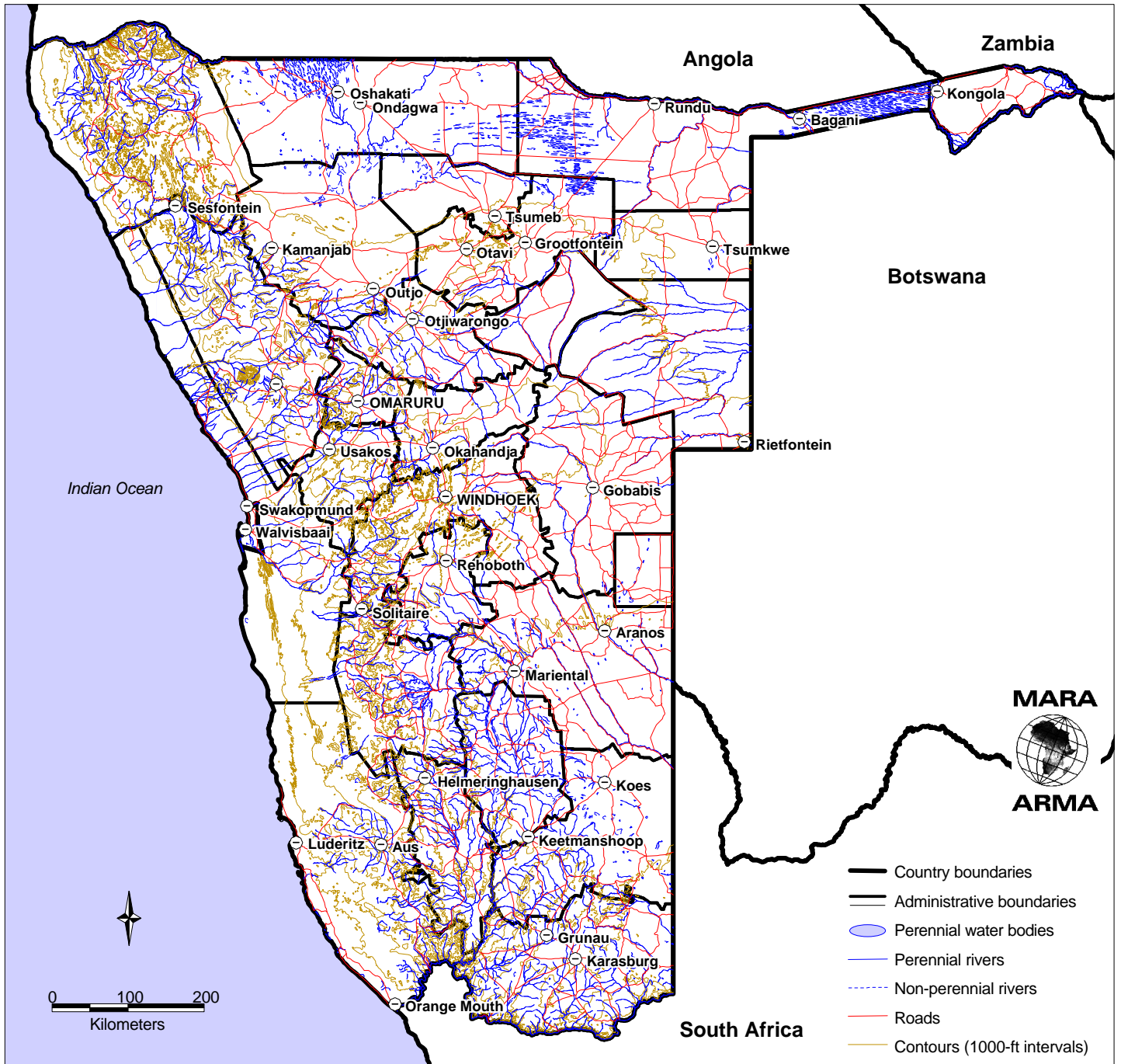


Namibia



This map is a product of the MARA/ARMA collaboration (<http://www.mara.org.za>). July 2001, Medical Research Council, PO Box 17120, Congella, 4013, Durban, South Africa
 CORE FUNDERS of MARA/ARMA: International Development Research Centre, Canada (IDRC); The Wellcome Trust UK; South African Medical Research Council (MRC);
 Swiss Tropical Institute, Multilateral Initiative on Malaria (MIM) / Special Programme for Research & Training in Tropical Diseases (TDR), Roll Back Malaria (RBM).
 Topographical data: African Data Sampler, WRI, http://www.igc.org/wri/sdis/maps/ads/ads_idx.htm.